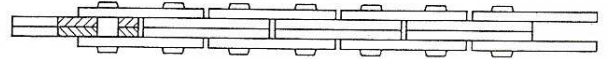
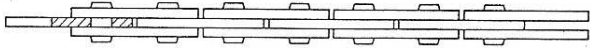
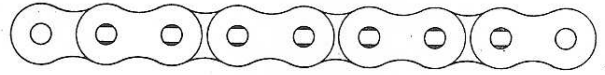
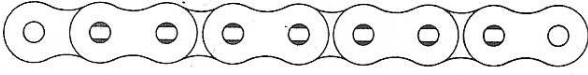


CASA DELLA CATENA DI TAMBURINI FABRIZIO

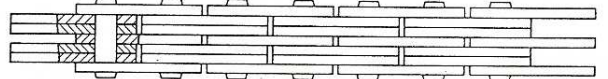
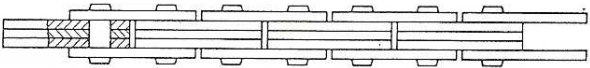
TRAZIONE TENSION LINKAGE

COMBINAZIONI USUALI STANDARD LACINGS



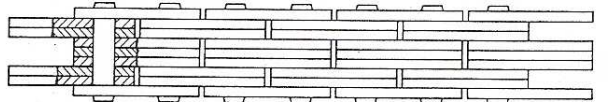
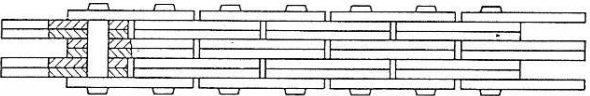
Combinazione 1 x 2

Combinazione 2 x 2



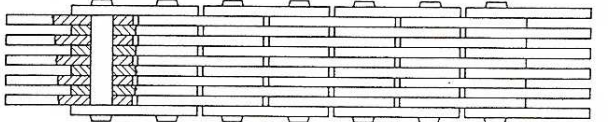
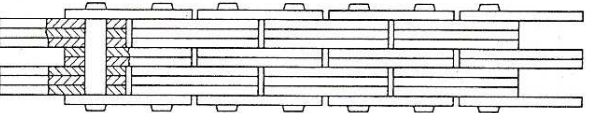
Combinazione 2 x 3

Combinazione 3 x 4



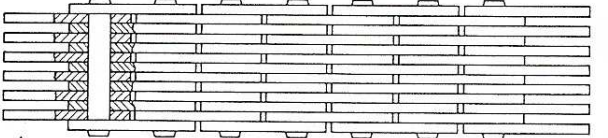
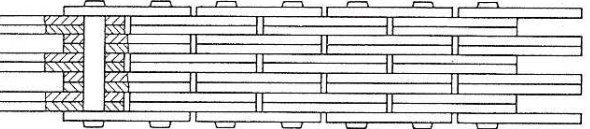
Combinazione 4 x 4

Combinazione 4 x 5



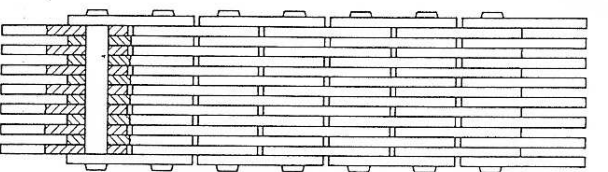
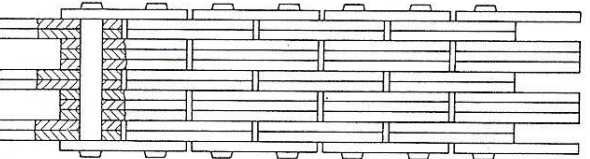
Combinazione 4 x 6

Combinazione 5 x 6



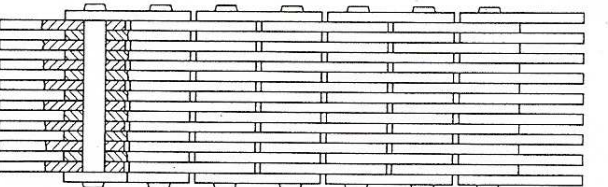
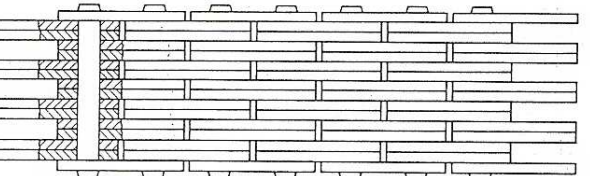
Combinazione 6 x 6

Combinazione 6 x 7



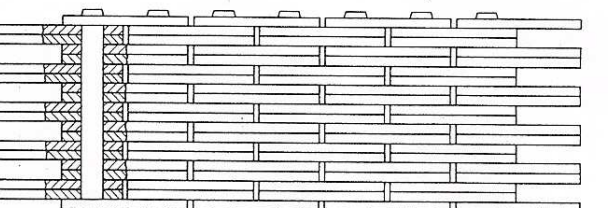
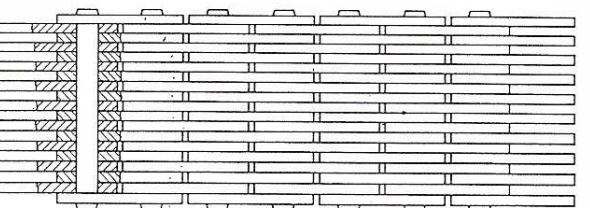
Combinazione 6 x 8

Combinazione 7 x 8



Combinazione 8 x 8

Combinazione 8 x 9



Combinazione 9 x 10

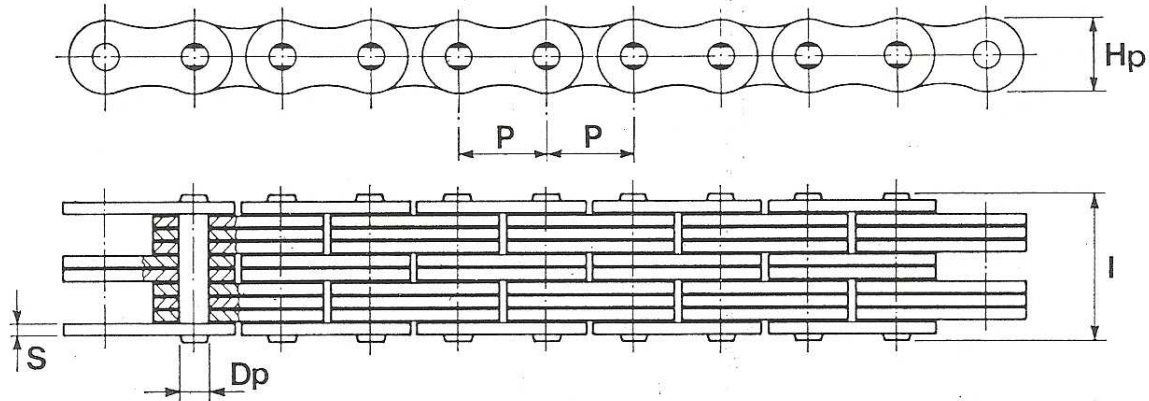
Combinazione 10 x 10

CASA DELLA CATENA DI TAMBURINI FABRIZIO

TRAZIONE TENSION LINKAGE

CATENE FLEYER TIPO BL

LEAF CHAINS TYPE BL



combinazione 4 x 6

SERIE AMERICANA - AMERICAN STANDARD

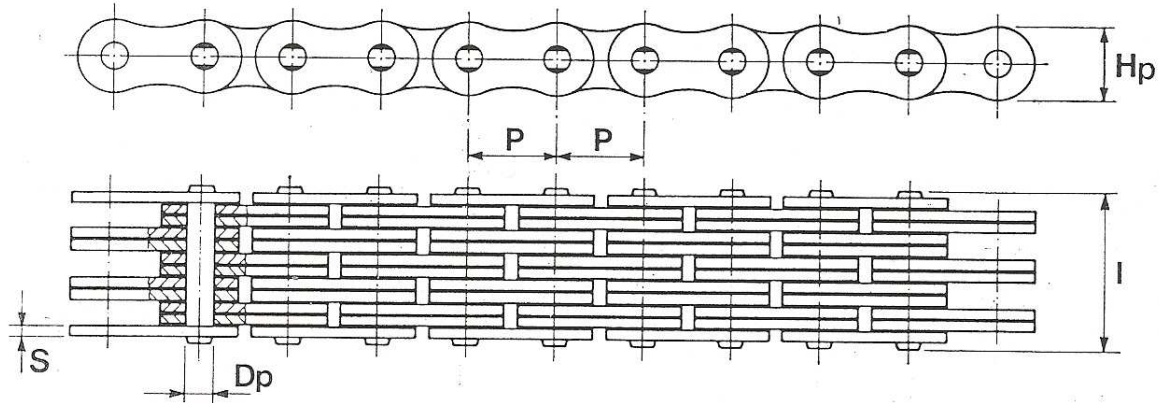
NOSTRO CODICE	Riferimento ISO	Combinazione	Dimensioni					Carico minimo di rottura Kg.	Carico minimo di rottura norme ISO Kg.	Peso netto al m. Kg./m.	TRADE MARK
			passo	diam. max perno	altezza max piastra	spessore piastra	largh. perno ribad.				
			p mm.	Dp mm.	Hp mm.	s mm.	l mm.				
● BL 423	LH 0823	2x3	12,70	5,08	11,60	1,98	12,50	2.660	2.264	0,76	
● BL 434	LH 0834	3x4	12,70	5,08	11,60	1,98	16,40	4.180	3.406	1,05	
● BL 446	LH 0846	4x6	12,70	5,08	11,60	1,98	22,70	5.360	4.539	1,50	
● BL 523	LH 1023	2x3	15,875	5,94	15,30	2,40	14,40	4.100	3.406	1,18	
● BL 534	LH 1034	3x4	15,875	5,94	15,30	2,40	19,40	6.350	4.987	1,61	
● BL 546	LH 1046	4x6	15,875	5,94	15,30	2,40	26,80	7.930	6.803	2,30	
● BL 623	LH 1223	2x3	19,05	7,92	18,10	3,25	20,60	4.980	4.800	1,82	
● BL 634	LH 1234	3x4	19,05	7,92	18,10	3,25	27,30	8.600	7.711	2,53	
● BL 646	LH 1246	4x6	19,05	7,92	18,10	3,25	37,40	12.600	9.985	3,57	
● BL 666	—	6x6	19,05	7,92	18,10	3,25	44,15	15.580	—	4,22	
✦ BL 823	LH 1623	2x3	25,40	9,50	24,00	4,00	25,02	8.600	8.290	3,08	
✦ BL 834	LH 1634	3x4	25,40	9,50	24,00	4,00	33,40	14.060	13.158	4,27	
✦ BL 846	LH 1646	4x6	25,40	9,50	24,00	4,00	45,90	18.600	17.238	6,05	
✦ BL 866	—	6x6	25,40	9,50	24,00	4,00	54,05	19.670	—	7,20	
✦ BL 1023	LH 2023	2x3	31,75	11,10	29,60	4,80	29,60	11.780	11.350	4,37	
✦ BL 1034	LH 2034	3x4	31,75	11,10	29,60	4,80	39,60	24.860	18.604	6,07	
✦ BL 1046	LH 2046	4x6	31,75	11,10	29,60	4,80	53,60	31.140	23.592	8,60	
✦ BL 1066	—	6x6	31,75	11,10	29,60	4,80	64,15	35.000	—	9,72	
✦ BL 1223	LH 2423	2x3	38,10	12,67	36,00	5,65	34,40	15.400	14.835	6,17	
✦ BL 1234	LH 2434	3x4	38,10	12,67	36,00	5,65	46,20	24.920	24.000	8,55	
✦ BL 1244	—	4x4	38,10	12,67	36,00	5,65	51,55	31.140	—	9,72	
✦ BL 1246	LH 2446	4x6	38,10	12,67	36,00	5,65	63,90	37.870	30.855	12,10	
✦ BL 1266	—	6x6	38,10	12,67	36,00	5,65	75,35	46.300	—	14,40	
✦ BL 1268	—	6x8	38,10	12,67	36,00	5,65	86,25	46.300	—	16,55	
✦ BL 1288	—	8x8	38,10	12,67	36,00	5,65	98,25	62.300	—	18,64	
✦ BL 1423	LH 2823	2x3	44,45	14,27	42,00	6,50	39,20	19.500	18.770	8,10	
✦ BL 1434	LH 2834	3x4	44,45	14,27	42,00	6,50	52,70	32.200	30.980	11,20	
✦ BL 1444	—	4x4	44,45	14,27	42,00	6,50	58,74	38.670	—	12,70	
✦ BL 1446	LH 2846	4x6	44,45	14,27	42,00	6,50	72,90	39.000	37.525	15,80	
✦ BL 1466	—	6x6	44,45	14,27	42,00	6,50	85,35	55.000	—	18,84	
✦ BL 1488	—	8x8	44,45	14,27	42,00	6,50	112,20	78.000	—	25,00	
✦ BL 1623	LH 3223	2x3	50,80	17,45	48,00	7,35	43,20	29.500	28.360	10,00	
✦ BL 1634	LH 3234	3x4	50,80	17,45	48,00	7,35	58,20	44.930	43.205	13,90	
✦ BL 1646	LH 3246	4x6	50,80	17,45	48,00	7,35	80,50	59.000	56.735	19,80	
✦ BL 1666	—	6x6	50,80	17,45	48,00	7,35	93,34	88.450	—	23,90	
✦ BL 1668	—	6x8	50,80	17,45	48,00	7,35	107,85	88.450	—	27,60	
✦ BL 1688	—	8x8	50,80	17,45	48,00	7,35	126,80	117.900	—	31,50	

CASA DELLA CATENA DI TAMBURINI FABRIZIO

TRAZIONE TENSION LINKAGE

CATENE FLEYER SERIE EUROPEA

LEAF CHAINS - EUROPEAN STANDARD



combinazione 6 x 6

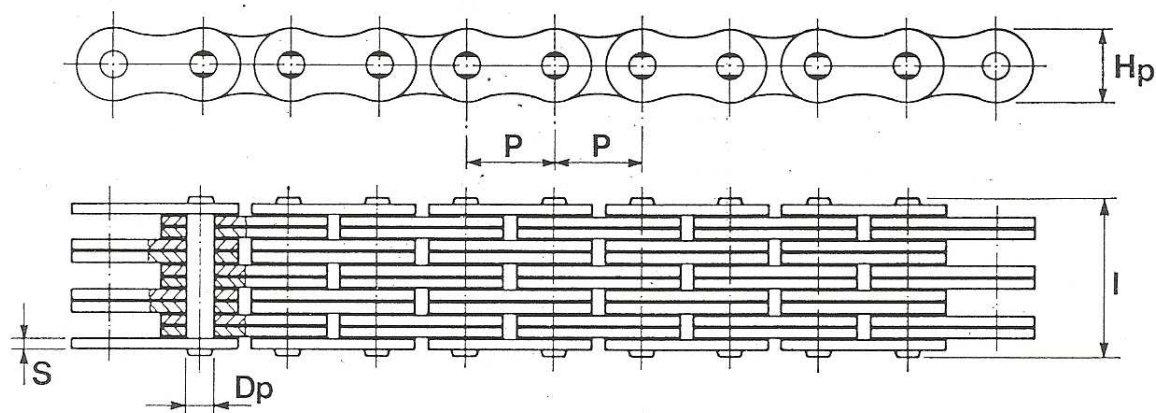
SERIE EUROPEA - EUROPEAN STANDARD

NOSTRO CODICE ●	Riferimento ISO	Combinazione	Dimensioni					Carico minimo di rottura Kg.	Carico minimo di rottura norme ISO Kg.	Peso netto al m. Kg./m.	TRADE MARK
			passo	diam. max perno	altezza max piastra	spessore piastra	largh. perno ribad.				
			p mm.	Dp mm.	Hp mm.	s mm.	l mm.				
LL 101	—	1 x 2	9,525	3,30	7,60	1,30	6,50	600	—	0,15	
LL 102	—	2 x 2	9,525	3,30	7,60	1,30	7,80	1.045	—	0,21	
LL 103	—	2 x 3	9,525	3,30	7,60	1,30	9,20	1.120	—	0,24	
LL 104	—	3 x 4	9,525	3,30	7,60	1,30	11,70	1.500	—	0,33	
LL 105	—	4 x 4	9,525	3,30	7,60	1,30	13,00	2.135	—	0,41	
LL 106	—	5 x 6	9,525	3,30	7,60	1,30	16,90	2.500	—	0,50	
LL 107	—	6 x 6	9,525	3,30	7,60	1,30	18,20	3.080	—	0,61	
LL 108	—	7 x 8	9,525	3,30	7,60	1,30	22,10	3.500	—	0,72	
LL 109	—	8 x 8	9,525	3,30	7,60	1,30	23,40	4.220	—	0,81	
LL 301	LL 0822	2 x 2	12,70	4,45	10,90	1,50	8,60	1.850	1.815	0,37	
LL 302	—	3 x 4	12,70	4,45	10,90	1,50	13,10	3.000	—	0,63	
LL 303	LL 0844	4 x 4	12,70	4,45	10,90	1,50	14,60	3.510	3.172	0,71	
LL 304	—	4 x 5	12,70	4,45	10,90	1,50	16,10	3.600	—	0,80	
LL 305	—	5 x 6	12,70	4,45	10,90	1,50	19,10	4.800	—	0,97	
LL 306	LL 0866	6 x 6	12,70	4,45	10,90	1,50	20,60	5.600	4.538	1,05	
LL 307	—	7 x 8	12,70	4,45	10,90	1,50	25,10	6.600	—	1,31	
LL 308	—	8 x 8	12,70	4,45	10,90	1,50	26,60	7.400	—	1,39	
LL 309	—	9 x 10	12,70	4,45	10,90	1,50	31,10	8.400	—	1,65	
LL 310	—	10 x 10	12,70	4,45	10,90	1,50	32,60	9.000	—	1,74	
LL 401	LL 1022	2 x 2	15,875	5,08	13,00	1,63	9,30	2.800	2.264	0,48	
LL 402	—	3 x 4	15,875	5,08	13,00	1,63	14,10	3.800	—	0,73	
LL 403	LL 1044	4 x 4	15,875	5,08	13,00	1,63	15,80	5.035	4.538	0,84	
LL 404	—	5 x 6	15,875	5,08	13,00	1,63	20,50	5.800	—	1,13	
LL 405	LL 1066	6 x 6	15,875	5,08	13,00	1,63	22,20	7.600	6.803	1,24	
LL 406	—	6 x 7	15,875	5,08	13,00	1,63	24,00	7.620	—	1,34	
LL 407	—	7 x 8	15,875	5,08	13,00	1,63	27,00	8.500	—	1,54	
LL 408	—	8 x 8	15,875	5,08	13,00	1,63	28,60	10.000	—	1,64	
LL 409	—	9 x 10	15,875	5,08	13,00	1,63	33,40	10.800	—	1,94	
LL 410	—	10 x 10	15,875	5,08	13,00	1,63	35,20	11.500	—	2,04	
LL 501	LL 1222	2 x 2	19,05	5,72	15,60	1,85	10,40	3.150	2.946	0,61	
LL 502	—	3 x 4	19,05	5,72	15,60	1,85	15,95	5.000	—	1,05	
LL 503	LL 1244	4 x 4	19,05	5,72	15,60	1,85	17,80	6.300	5.894	1,19	
LL 504	—	5 x 6	19,05	5,72	15,60	1,85	23,35	8.000	—	1,62	
LL 505	LL 1266	6 x 6	19,05	5,72	15,60	1,85	25,20	9.450	8.842	1,77	
LL 506	—	7 x 8	19,05	5,72	15,60	1,85	30,75	11.000	—	2,20	
LL 507	—	8 x 8	19,05	5,72	15,60	1,85	32,60	12.000	—	2,34	
LL 508	—	9 x 10	19,05	5,72	15,60	1,85	38,15	14.000	—	2,78	
LL 509	—	10 x 10	19,05	5,72	15,60	1,85	40,00	15.000	—	2,92	

CASA DELLA CATENA DI TAMBURINI FABRIZIO

TRAZIONE TENSION LINKAGE

CATENE FLEYER SERIE EUROPEA LEAF CHAINS - EUROPEAN STANDARD



combinazione 6 x 6

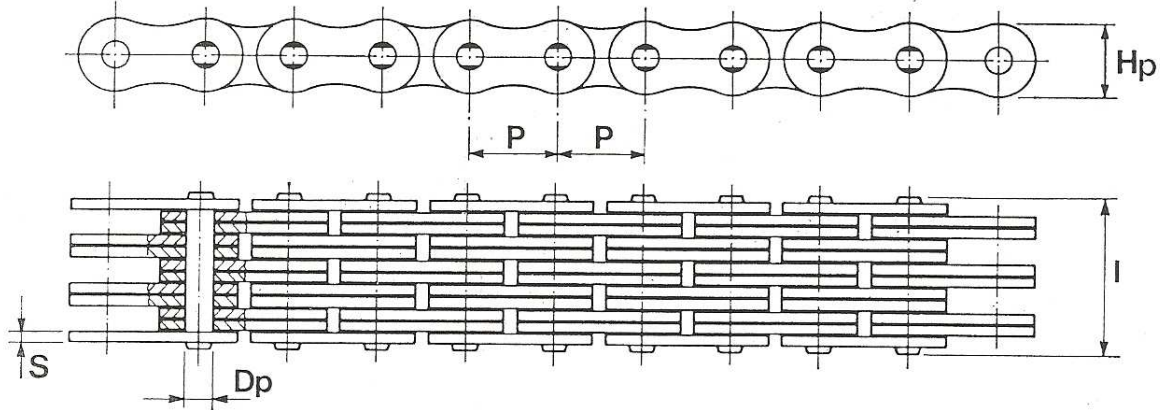
SERIE EUROPEA - EUROPEAN STANDARD

NOSTRO CODICE ●	Riferi- mento ISO	Combi- nazione	Dimensioni					Carico minimo di rottura	Carico minimo di rottura norme ISO	Peso netto al m.	TRADE MARK
			passo	diam. max perno	altezza max piastra	spessore piastra	largh. perno ribad.				
			p mm.	Dp mm.	Hp mm.	s mm.	I mm.				
LL 601	LL 1622	2x2	25,40	8,28	21,60	3,00	15,00	6.600	4.314	1,51	
LL 602	—	3x4	25,40	8,28	21,60	3,00	24,00	9.900	—	2,61	
LL 603	LL 1644	4x4	25,40	8,28	21,60	3,00	27,00	13.200	8.618	2,97	
LL 604	—	5x6	25,40	8,28	21,60	3,00	36,00	16.500	—	4,07	
LL 605	LL 1666	6x6	25,40	8,28	21,60	3,00	39,00	19.800	12.932	4,43	
LL 606	—	7x8	25,40	8,28	21,60	3,00	48,00	23.100	—	5,53	
LL 607	—	8x8	25,40	8,28	21,60	3,00	51,00	26.000	—	5,89	
LL 701	LL 2022	2x2	31,75	10,15	24,90	3,50	17,00	9.300	6.579	2,00	
LL 702	—	3x4	31,75	10,15	24,90	3,50	27,50	14.000	—	3,46	
LL 703	LL 2044	4x4	31,75	10,15	24,90	3,50	31,00	18.500	13.158	3,95	
LL 704	—	5x6	31,75	10,15	24,90	3,50	41,50	22.500	—	5,40	
LL 705	LL 2066	6x6	31,75	10,15	24,90	3,50	45,00	28.000	19.737	5,89	
LL 706	—	7x8	31,75	10,15	24,90	3,50	55,50	32.000	—	7,34	
LL 707	—	8x8	31,75	10,15	24,90	3,50	59,00	37.000	—	7,83	
LL 801	LL 2422	2x2	38,10	14,55	32,70	5,50	27,00	18.335	9.986	4,12	
LL 802	—	3x4	38,10	14,55	32,70	5,50	43,50	27.500	—	7,09	
LL 803	LL 2444	4x4	38,10	14,55	32,70	5,50	49,00	36.670	19.960	8,08	
LL 804	—	5x6	38,10	14,55	32,70	5,50	65,50	45.000	—	11,04	
LL 805	LL 2466	6x6	38,10	14,55	32,70	5,50	71,00	55.000	29.946	12,03	
LL 806	—	7x8	38,10	14,55	32,70	5,50	87,50	63.000	—	14,99	
LL 807	—	8x8	38,10	14,55	32,70	5,50	93,00	72.000	—	15,98	
LL 851	LL 2822	2x2	44,45	15,83	36,60	6,35	29,70	22.400	13.158	6,45	
LL 853	LL 2844	4x4	44,45	15,83	36,60	6,35	54,30	44.800	26.316	12,71	
LL 855	LL 2866	6x6	44,45	15,83	36,60	6,35	78,90	67.200	39.474	18,98	
LL 857 BP	—	6x7	44,45	14,35	42,90	6,00	83,00	70.000	—	20,44	
LL 858	—	8x8	44,45	15,83	36,60	6,35	103,50	88.000	—	25,24	
LL 859 BP	—	8x9	44,45	14,35	42,90	6,00	107,00	96.000	—	26,68	
LL 901	LL 3222	2x2	50,80	17,75	44,50	6,35	31,70	25.000	17.238	6,01	
LL 903	LL 3244	4x4	50,80	17,75	44,50	6,35	57,70	50.000	34.486	11,78	
LL 905	LL 3266	6x6	50,80	17,75	44,50	6,35	83,70	75.000	51.714	17,56	
LL 908	—	8x8	50,80	17,75	44,50	6,35	109,70	98.000	—	23,34	
LL 909 BP	—	8x9	50,80	16,00	44,50	7,00	125,00	100.000	—	27,15	
♦ LL 951	LL 4022	2x2	63,50	22,89	52,80	8,10	39,80	37.500	26.764	9,87	
♦ LL 953	LL 4044	4x4	63,50	22,89	52,80	8,10	72,80	75.000	53.539	19,38	
♦ LL 955	LL 4066	6x6	63,50	22,89	52,80	8,10	105,80	112.500	80.304	28,91	
♦ LL 958	—	8x8	63,50	22,89	52,80	8,10	138,80	148.000	—	38,60	

CASA DELLA CATENA DI TAMBURINI FABRIZIO

TRAZIONE TENSION LINKAGE

CATENE FLEYER TIPO AL LEAF CHAINS - TYPE AL



combinazione 6 x 6

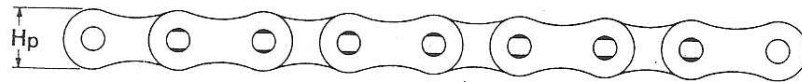
SERIE AMERICANA (ANSI) - AMERICAN STANDARD

NOSTRO CODICE Ⓢ	Combi- nazione	Dimensioni					Carico minimo di rottura	Carico minimo di rottura norme ANSI	Peso netto al m.	TRADE MARK
		passo	diam. max perno	altezza max piastra	spessore piastra	largh. perno ribad.				
		p mm.	Dp mm.	Hp mm.	s mm.	I mm.				
AL 422	2x2	12,70	3,96	10,90	1,53	8,5	1.700	1.500	0,37	
AL 444	4x4	12,70	3,96	10,90	1,53	14,9	3.600	3.000	0,72	
AL 466	6x6	12,70	3,96	10,90	1,53	21,4	5.150	4.500	1,05	
AL 522	2x2	15,875	5,08	13,10	2,03	10,6	2.850	2.500	0,64	
AL 544	4x4	15,875	5,08	13,10	2,03	19,1	5.700	5.000	1,25	
AL 566	6x6	15,875	5,08	13,10	2,03	27,3	8.550	7.500	1,86	
AL 622	2x2	19,05	5,94	15,60	2,40	12,7	4.100	3.400	0,78	
AL 643	4x3	19,05	5,94	15,60	2,40	20,3	6.200	5.100	1,38	
AL 644	4x4	19,05	5,94	15,60	2,40	22,8	8.200	6.800	1,52	
AL 666	6x6	19,05	5,94	15,60	2,40	32,7	12.300	10.200	2,28	
AL 688	8x8	19,05	5,94	15,60	2,40	43,0	16.400	13.600	3,01	
AL 822	2x2	25,40	7,92	21,60	3,25	17,2	7.200	5.900	1,53	
AL 844	4x4	25,40	7,92	21,60	3,25	30,8	14.500	11.800	2,99	
AL 866	6x6	25,40	7,92	21,60	3,25	44,2	21.700	17.700	4,46	
AL 888	8x8	25,40	7,92	21,60	3,25	57,8	29.000	23.600	5,82	
AL 1022	2x2	31,75	9,50	27,20	4,00	21,0	10.400	8.600	2,58	
AL 1044	4x4	31,75	9,50	27,20	4,00	37,7	20.800	17.200	5,02	
AL 1056	5x6	31,75	9,50	27,20	4,00	50,0	20.800	17.200	6,86	
AL 1066	6x6	31,75	9,50	27,20	4,00	54,5	31.300	25.800	7,49	
AL 1088	8x8	31,75	9,50	27,20	4,00	70,7	41.700	34.400	9,82	
AL 1222	2x2	38,10	11,10	32,70	4,80	24,5	14.500	12.250	3,71	
AL 1244	4x4	38,10	11,10	32,70	4,80	44,4	29.000	24.500	7,33	
AL 1266	6x6	38,10	11,10	32,70	4,80	64,3	43.500	36.750	10,95	
AL 1288	8x8	38,10	11,10	32,70	4,80	83,5	58.000	49.000	14,55	
AL 1422	2x2	44,45	12,67	36,60	5,65	28,5	18.600	15.450	4,87	
AL 1444	4x4	44,45	12,67	36,60	5,65	51,9	37.200	30.900	9,61	
AL 1466	6x6	44,45	12,67	36,60	5,65	75,3	55.800	46.350	14,34	
AL 1488	8x8	44,45	12,67	36,60	5,65	97,8	74.800	61.800	19,02	
AL 1622	2x2	50,80	14,27	44,50	6,50	32,0	23.500	19.500	6,27	
AL 1644	4x4	50,80	14,27	44,50	6,50	58,7	47.100	39.000	12,40	
AL 1666	6x6	50,80	14,27	44,50	6,50	85,4	70.700	58.500	18,53	
AL 1688	8x8	50,80	14,27	44,50	6,50	112,2	94.300	78.000	24,67	

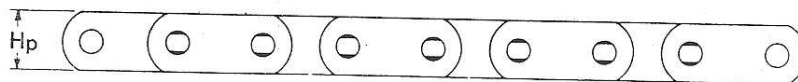
CASA DELLA CATENA DI TAMBURINI FABRIZIO

TRAZIONE TENSION LINKAGE

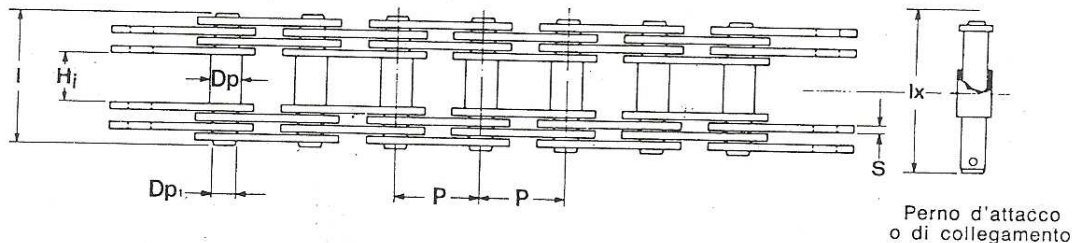
CATENE GALLE GALLE CHAINS



Stile S



Stile D



Perno d'attacco
o di collegamento

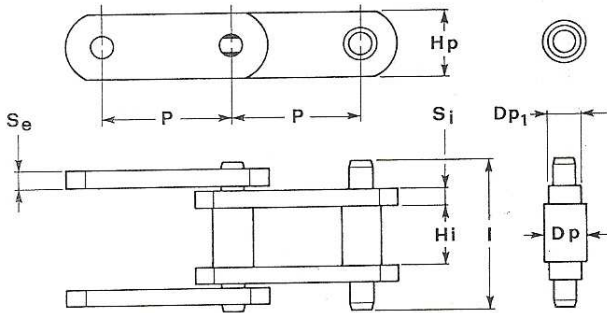
CATENE GALLE A PERNI - GALLE CHAINS WITH PINS

NOSTRO CODICE	Dimensioni									Stile piastre	Piastre per passo	Carico medio di rottura ■ kg.	Peso netto al m. kg./m.	TRADE MARK
	passo	largh. interna	diam. max perno	diam. ribasso perno	altezza max piastra	spess. piastra	largh. perno ribad.	ingom- bro max.						
	P mm.	Hi mm.	Dp mm.	Dp ₁ mm.	Hp mm.	s mm.	l mm.	lx mm.						
● G6020	20	15	8	6	15	2,0	27	32	S	2	2.900	1,10		
● G6025	25	18	10	8	18	3,0	35	41	S	2	4.800	1,80		
✦ G6030	30	20	11	9	20	3,0	50	57	S-D	4	10.000	3,40		
● G6035	35	22	12	10	26	3,0	52	60	S	4	15.000	4,50		
✦ G6040	40	25	14	12	30	3,0	57	65	S-D	4	17.000	4,70		
● G6045	45	30	17	14	35	3,0	62	69	S-D	4	20.000	6,40		
✦ G6050	50	35	22	18	38	4,5	89	96	S-D	4	29.000	10,60		
● G6055	55	40	24	21	40	6,0	107	114	D	4	36.000	15,50		
✦ G6060	60	45	26	23	45	6,0	113	119	D	4	42.000	18,00		
● G6070	70	50	32	28	55	6,0	147	156	D	6	77.000	33,50		
✦ G6080	80	60	36	32	60	6,0	158	170	D	6	83.000	38,20		
✦ G6090	90	70	40	36	70	7,0	183	199	D	6	109.000	53,00		
✦ G6100	100	80	45	40	80	7,0	223	238	D	8	180.000	76,60		
✦ G6110	110	90	50	45	90	7,0	235	250	D	8	200.000	90,00		
✦ G6120	120	100	55	50	100	8,0	261	276	D	8	250.000	112,00		

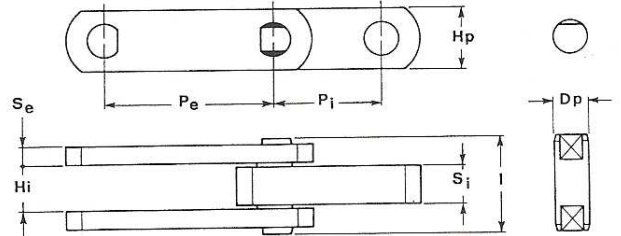
■ CARICO DI ROTTURA PER CATENE CON PIASTRE TRATTATE

TRAZIONE TENSION LINKAGE

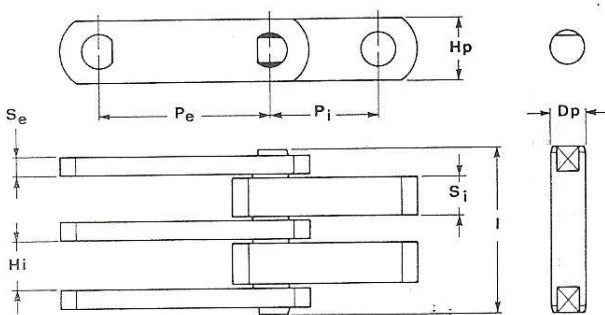
CATENE PER TRAFILE DRAWBENCH CHAINS



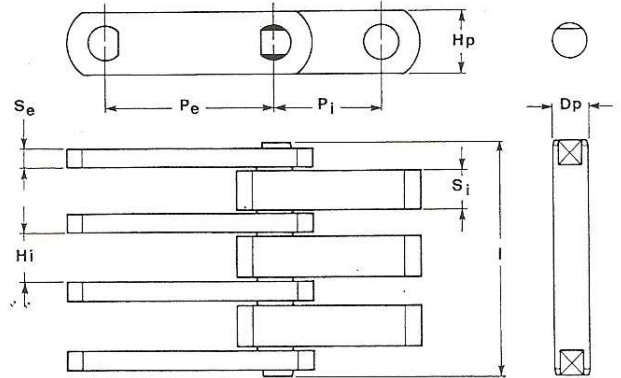
Stile N



Stile S



Stile D



Stile T

CATENE PER TRAFILE - DRAWBENCH CHAINS

NOSTRO CODICE ♦	Stile	Dimensioni									Carico medio di rottura Kg.	Peso netto al m. Kg./m.	TRADE MARK
		Passo		largh. interna Hi mm.	diam. perno Dp mm.	diam. ribasso perno Dp1 mm.	altezza max piastra Hp mm.	spess. piastre interne Si mm.	spess. piastre esterne Se mm.	largh. perno ribad. l mm.			
		piastre esterne Pe mm.	piastre interne Pi mm.										
CT 11651	N	116,51	—	70,0	38,10	31,80	63,5	19,0	19,0	156	90.000	33,5	
CT 16510	S	165,10	88,90	39,7	38,10	—	76,2	38,1	19,0	86	130.000	30,1	
CT 16511	S	165,10	88,90	39,7	44,50	—	76,2	38,1	19,0	86	150.000	34,5	
CT 16512	S	165,10	88,90	52,4	38,10	—	76,2	50,8	25,4	113	165.000	46,1	
CT 21590	S	215,90	120,65	65,1	50,80	—	101,6	63,5	25,4	130	235.000	67,2	
CT 24765	D	247,65	127,00	42,9	63,50	—	114,3	41,3	28,6	181	395.000	121,3	
CT 24766	D	247,65	127,00	59,5	60,30	—	114,3	57,2	28,6	215	420.000	127,7	
CT 27500	T	275,00	145,00	83,0	86,00	—	140,0	80,0	40,0	424	517.000	287,5	
CT 27501	T	275,00	145,00	83,0	86,00	—	140,0	80,0	60,0	505	600.000	361,2	